

Product Datasheet

Swifter
Smarter
Safer

Frontier Raised Planter
Edging

LOGIC™
MANUFACTURED BESPOKE

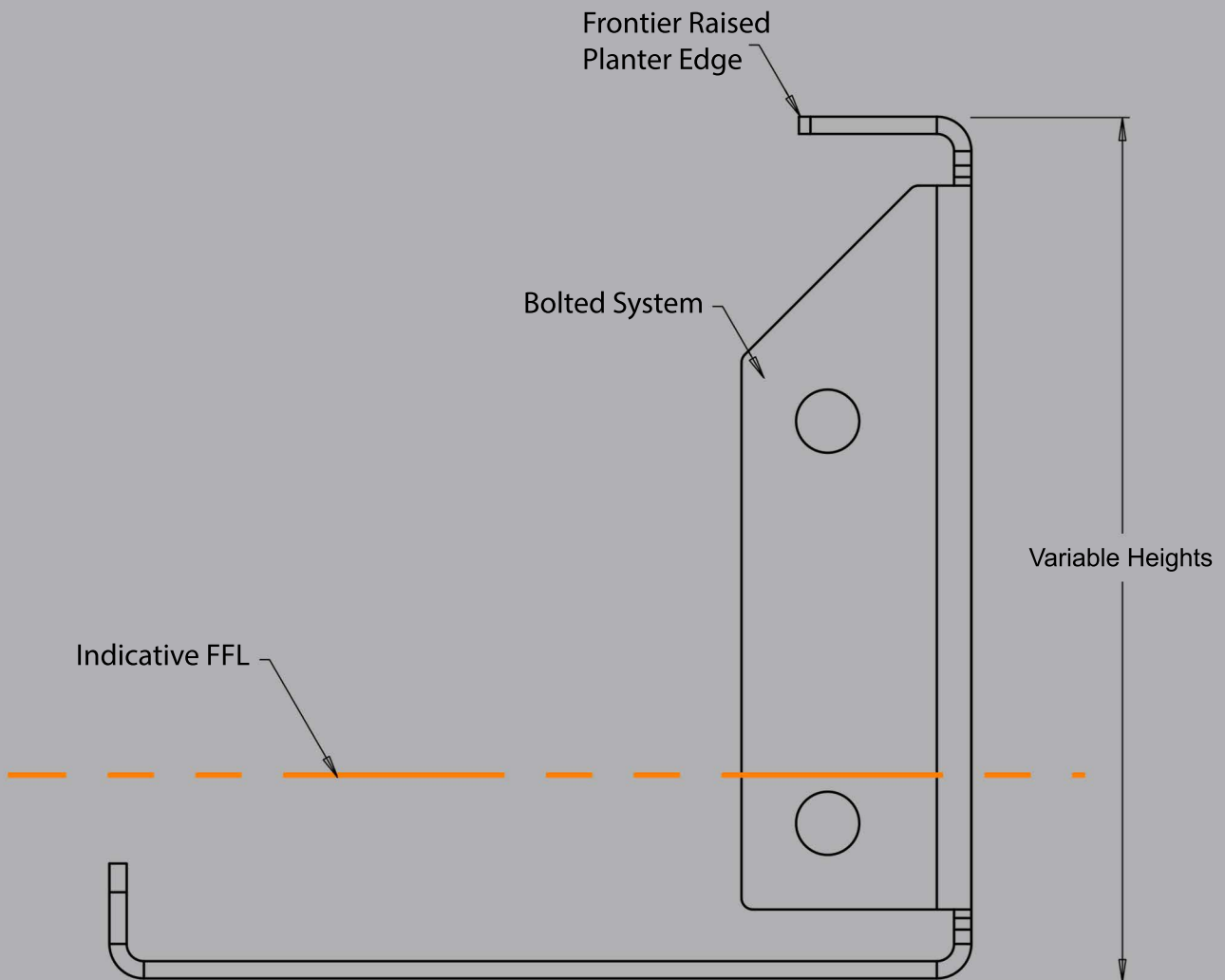
www.logic-bespoke.com

Design

The Frontier Raised Planter Edge is defined by it's vertical face and classic 50mm top return. This is the lowest profile design of the Logic raised planter edge options.

Heights

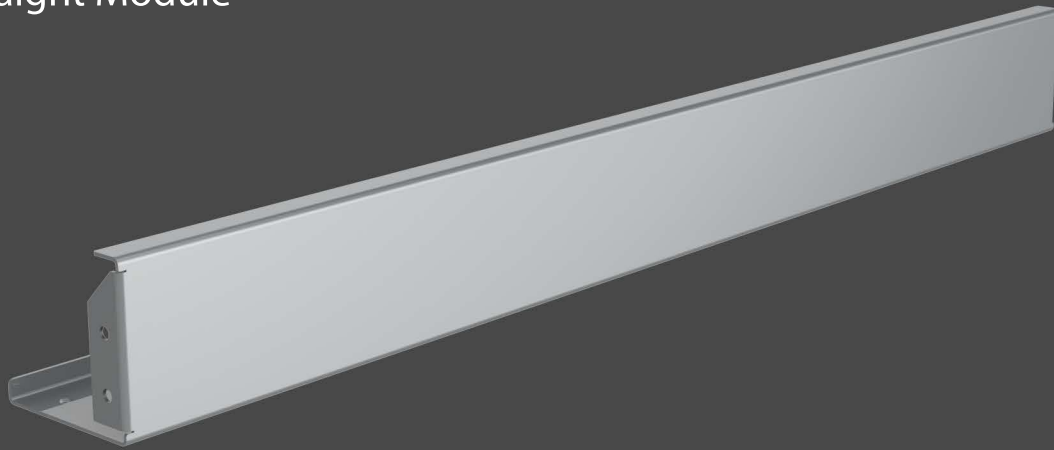
This design is available in any height from 150mm up to 300mm. Whilst any measurement is available, it's recommended to speak with one of our technical consultants for maximum material usage.



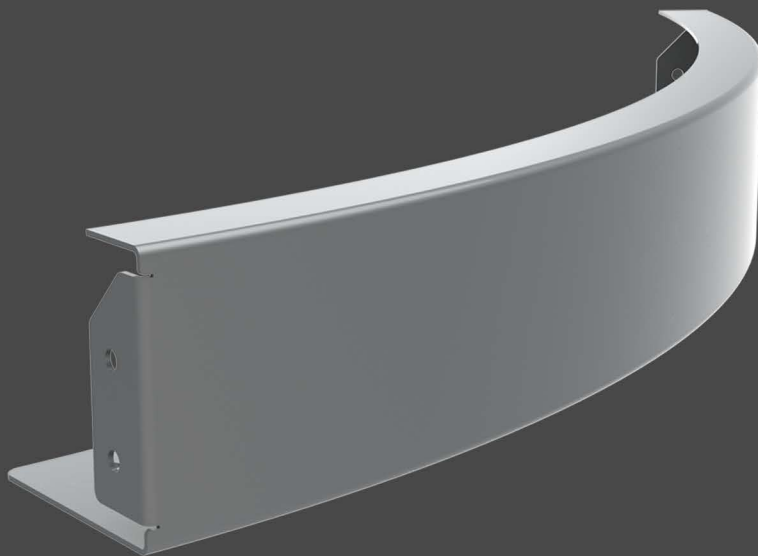
Configurations

This design is available in straight modules, curved modules (any radii available) and variable height available on both straight & curved.

Straight Module



Curved Module



Finishes

Many finishes are available with this design, we've list below the three most popular. However, there are other specialist finishes available, for more information on these please contact the Logic technical team.

Powder Coated

Wide range of options from RAL colour spectrum

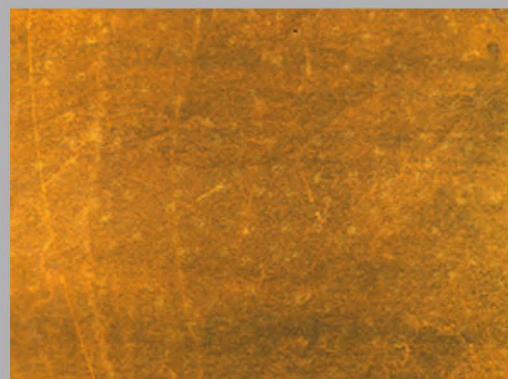


Stainless Steel

Available in varying grades, according to durability required.

Weathering Steel

Grade A, for further detail please refer to Logic datasheet.



Require assistance?

Call our specification team on 01642 373400

CONTACT

Email: specification@logic-bespoke.com

Phone: 01642 373400