

# Product Datasheet

---

**Swifter**  
**Smarter**  
**Safer**

---

Gardien

**LOGIC**<sup>™</sup>  
MANUFACTURED BESPOKE

[www.logic-bespoke.com](http://www.logic-bespoke.com)



### The Gardian

The Gardien is an aesthetically pleasing Modular Vehicle Barrier which is HVM certified and mitigates the projectile risk. With no foundation or ground fixing, this barrier offers the benefit of modular flexibility.



### Swifter

Quick and easy install and uninstall.



### Smarter

Aesthetic improvement.  
Effective means of protection.



### Safer

Protecting members of the public and physical assets.



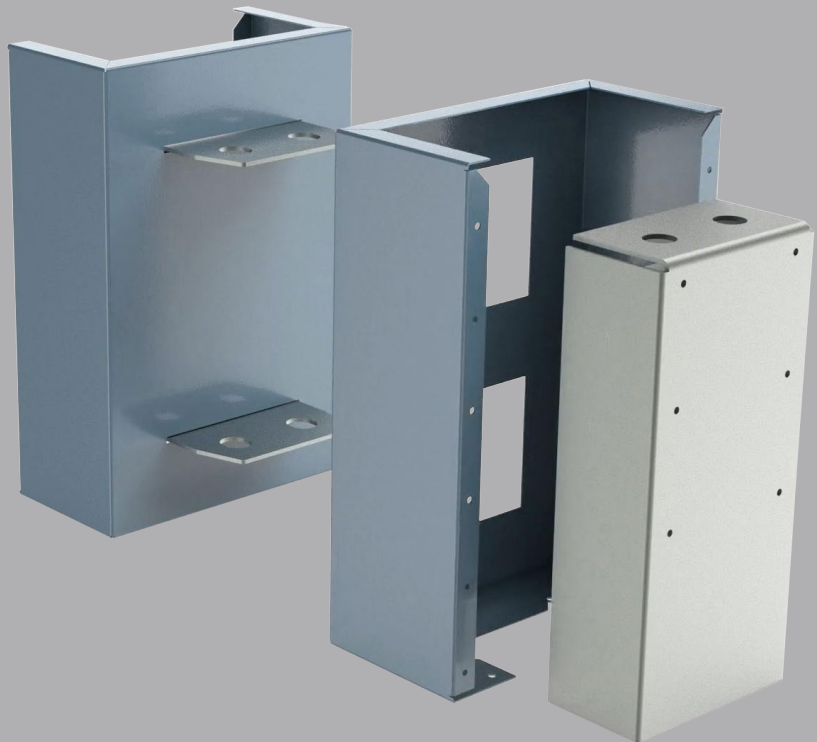
## Product Datasheet

Gardien

### The Modula Approach

The Gardien requires no ground fixing. But surely, with all that weight, how can this be called a flexible system?

The Locking System means that this units can be split up for easy transport.



How is does the Gardien comply to HVM standards without ground fixing?

It's true that a block of concrete is simple enough to stop a vehicle threat, but that's not everything.

We have taken the versatility of a concrete block barrier and made some significant changes:

- Improved the Aesthetics
- Removed the Projectile Risk

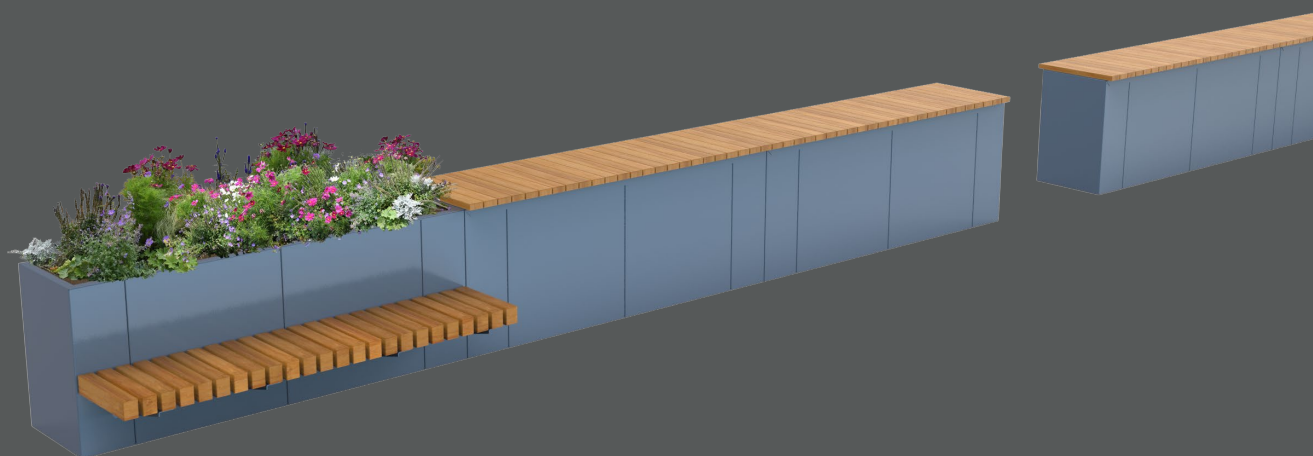
The gardien has been tested in two configurations. Formed and Linier. Each is available with differnt designs a finishes.

### Configurations

## Configuration 1 - Linear\*

With the Linear, the moduels form a straight barrier. Availabe with a number of additional features, this design is perfect for pavements, or areas of limited space such as infront of a building.

\*Undergoing continued testing. Please enquire.



## Configuratin 2 - Formed\*

The formed, with the addition of corner sections creates a U shaped barrier. This design can also host additional features such as benches and is best suited in areas where there is more space available, at a retail part for example.

\*Test Rating: IWA14-1:2013 Planter V/2500[N1G]/64/90:5.6



## Top Designs

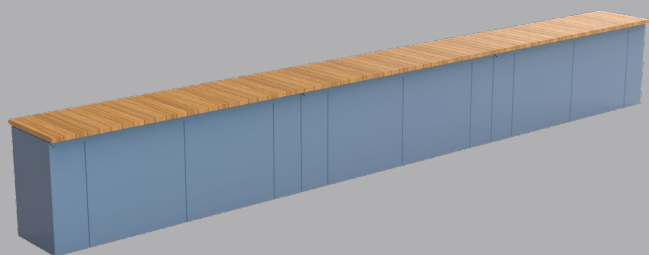
Linear  
Planting



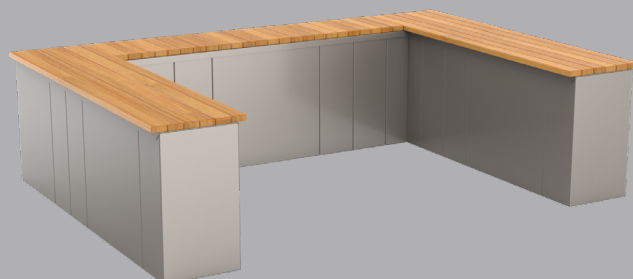
Formed  
Planting



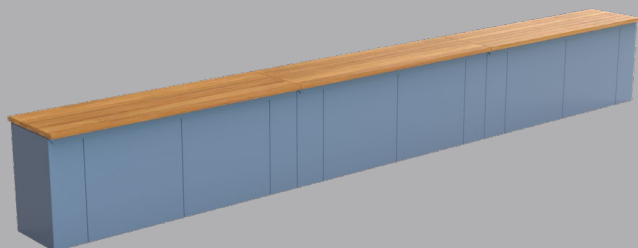
Linear  
Intermediate Bar Top



Formed  
Intermediate Bar Top



Linear  
Longitudinal Bar Top



Formed  
Longitudinal Bar Top



Seating Designs

Linear  
Intermediate Module



Formed  
Intermediate Module



Linear  
Longitudinal Module



Formed  
Longitudinal Module





## Product Datasheet

Gardien

### Finishes

Many finishes are available with this design, we've list below the three most popular. However, there are other specialist finishes available, for more information on these please contact the Logic technical team.

#### Powder Coated

Steel Type:	Galvanised Mild Steel / Stainless Steel / Mild Steel, polyester powder coat finish.
Durability:	High /Medium.
Surface Finish:	Flat with semi-gloss finish.
Aesthetics:	Complete range of RAL colours, specialist finishes available.
Country of Origin:	Steel - United Kingdom , with some world wide content. PPC content - United Kingdom.



#### Stainless Steel

Steel Type:	Stainless Steel, various grades.
Durability:	High.
Surface Finish:	Polished, bead blast or brushed.
Aesthetics:	Polished very flat surface with almost mirror finish Brushed flat surface with lightly engrained straight lines and a semi matt finish.
Country of Origin:	United Kingdom, with some world. wide content.



#### Weathering Steel

Steel Type:	Weathering Steel, grade A.
Durability:	High.
Surface Finish:	Flat with slight texture.
Aesthetics:	Weathering Steel begins its life looking like ordinary Mild Steel. Over a period of time, due to the moisture levels in the atmosphere, the surface will oxidise turning an orangey brown colour, and eventually self seals. There is no defined period to this process as the moisture levels in the atmosphere fluctuate. Often there are colour variations between sections and also within each section.
Country of Origin:	United Kingdom, with some world wide content.





## Product Datasheet

Gardien

### Finishes

Many finishes are available with this design, we've list below the three most popular. However, there are other specialist finishes available, for more information on these please contact the Logic technical team.

### Timber Species

#### Iroko

Material:	Iroko - Genus Milicia
Finish:	Natural
Durability:	Class 2
Country of Origin:	Africa
Forest Type:	Virgin Rain Forest

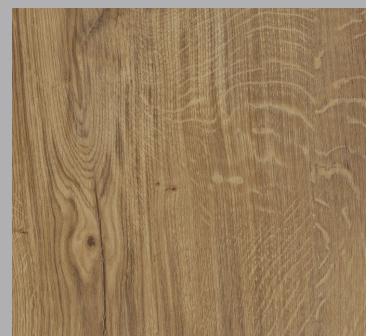


#### Douglas-Fir

Material:	Douglas-Fir - Pseudotsuga Menziesii
Finish:	Natural
Durability:	Class 3
Country of Origin:	United Kingdom
Forest Type:	Plantation

#### Oak

Material:	Oak - Quercus Robur
Finish:	Natural
Durability:	Class 2
Country of Origin:	United Kingdom
Forest Type:	Plantation / Secondary Growth



As wood is a natural grown material, there will be variations in colour, grain structure, knots and moisture content. This all creates the beauty of this versatile material. Some timbers have a greater or lesser concentration of naturally occurring Quertannic acids, please refer to the O&M manual for handling of such.







## Require assistance?

Call our specification team on 01642 373400

### CONTACT

**Email:** [specification@logic-bespoke.com](mailto:specification@logic-bespoke.com)

**Phone:** 01642 373400