

Product Datasheet

Swifter
Smarter
Safer

Slante Planter Tub

LOGICTM
MANUFACTURED BESPOKE

www.logic-bespoke.com

Product Datasheet

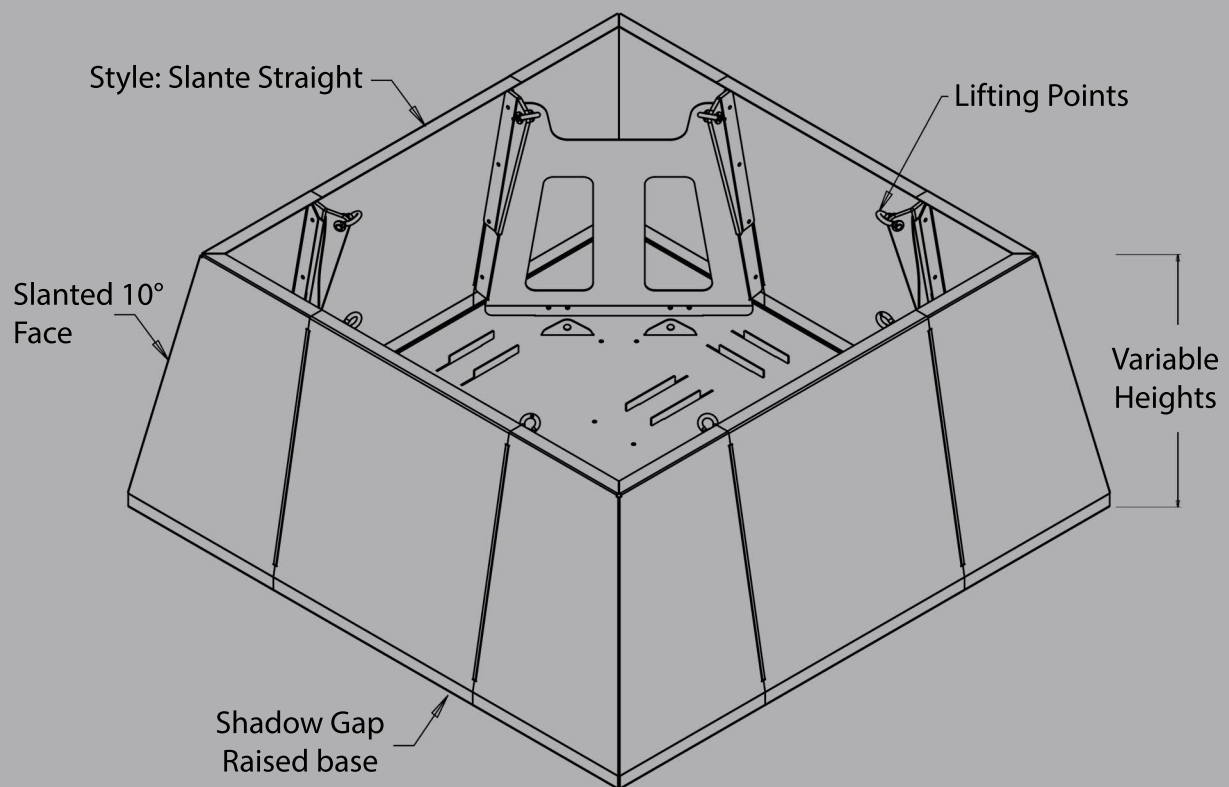
Slante Planter Tub

Design

The Slante Planter Tub is defined by its angular face & 50mm top return. For use in areas where access is required; this maybe due to services above/below ground where the planters are to be placed, or external events may require temporary relocation. With cleverly hidden lifting eyes, these can be lifted complete with soil and planting content. Due to this, there are certain dimensional restrictions of which our Technical Team can advise on.

Dimensions

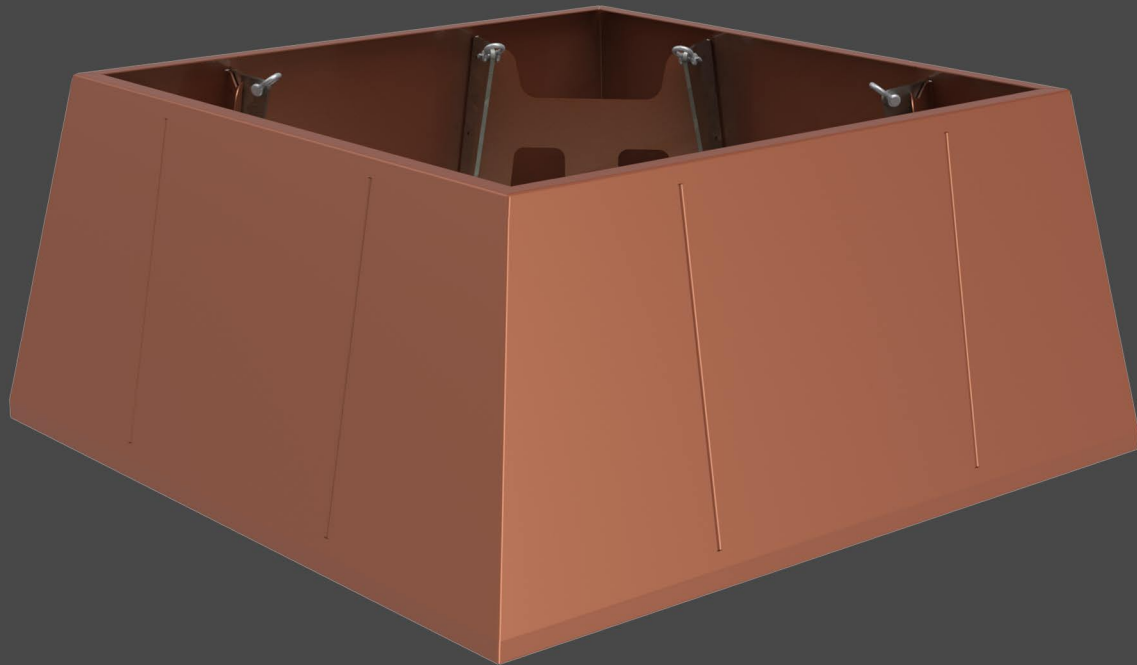
This design is available in any height from 500mm up to 1000mm. Foot prints available 1000x1000mm upto 2000x2000.



Shape

These designs are only available in square & rectangular designs.

Square / Rectangular

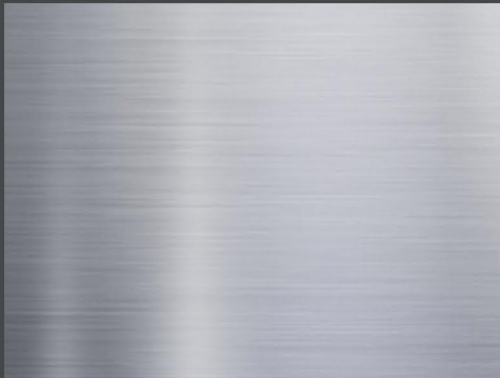


Finishes

Many finishes are available with this design, we've list below the three most popular. However, there are other specialist finishes available, for more information on these please contact the Logic technical team.

Powder Coated

Wide range of options from RAL colour spectrum



Stainless Steel

Available in varying grades, according to durability required.

Weathering Steel

Grade A, for further detail please refer to Logic datasheet.



Require assistance?

Call our specification team on 01642 373400

CONTACT

Email: specification@logic-bespoke.com

Phone: 01642 373400