

# Product Datasheet

---

**Swifter**  
**Smarter**  
**Safer**

---

Slante Raised Planter  
Edging

**LOGIC**™  
MANUFACTURED BESPOKE

[www.logic-bespoke.com](http://www.logic-bespoke.com)



## Design

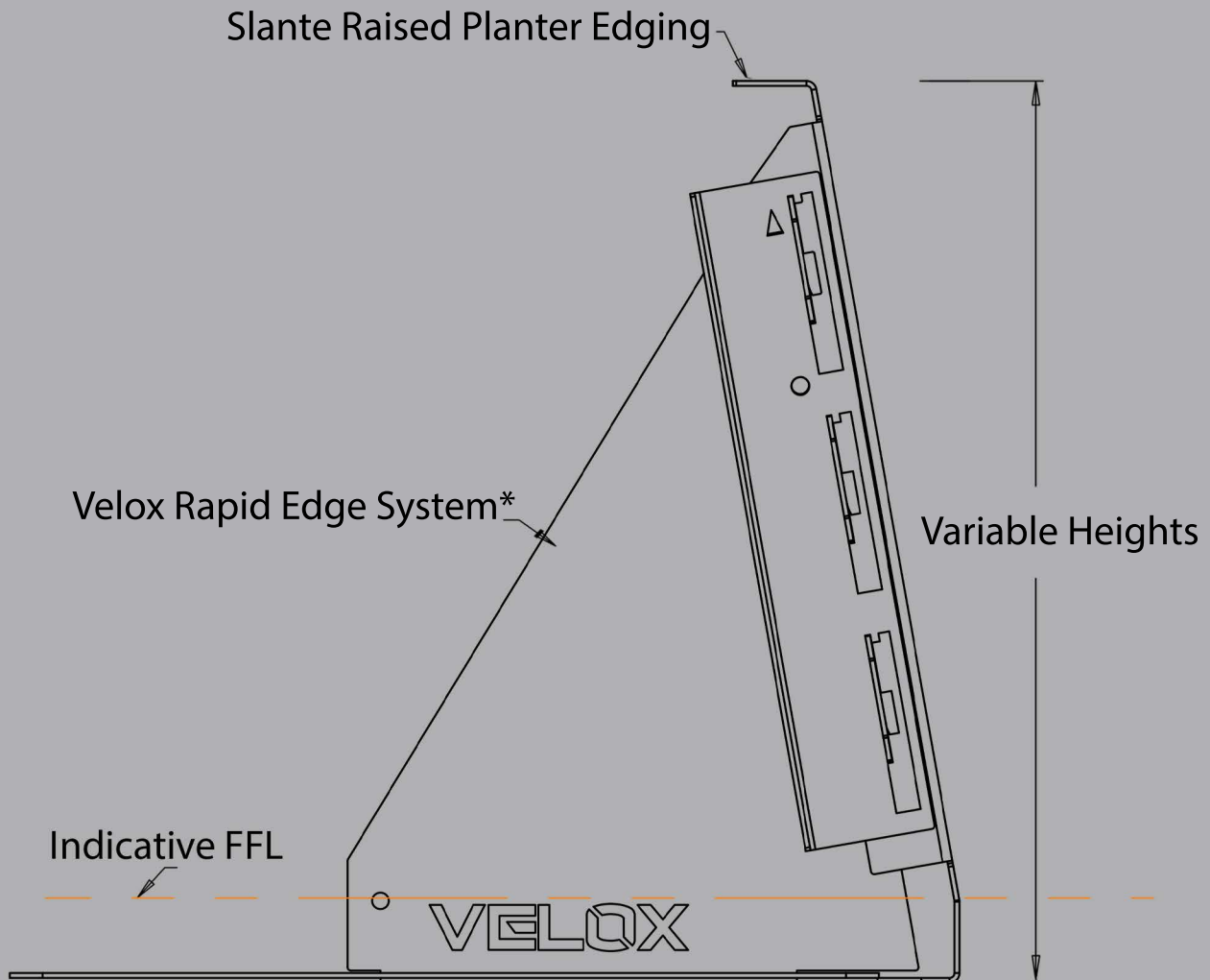
The Slante Raised Planter Edge is defined by it's angular 10 degree face with 50mm top return.





## Heights

This design is available in any height from 300mm up to 1100mm. Whilst any measurement is available, it's recommended to speak with one of our technical consultants for maximum material usage.

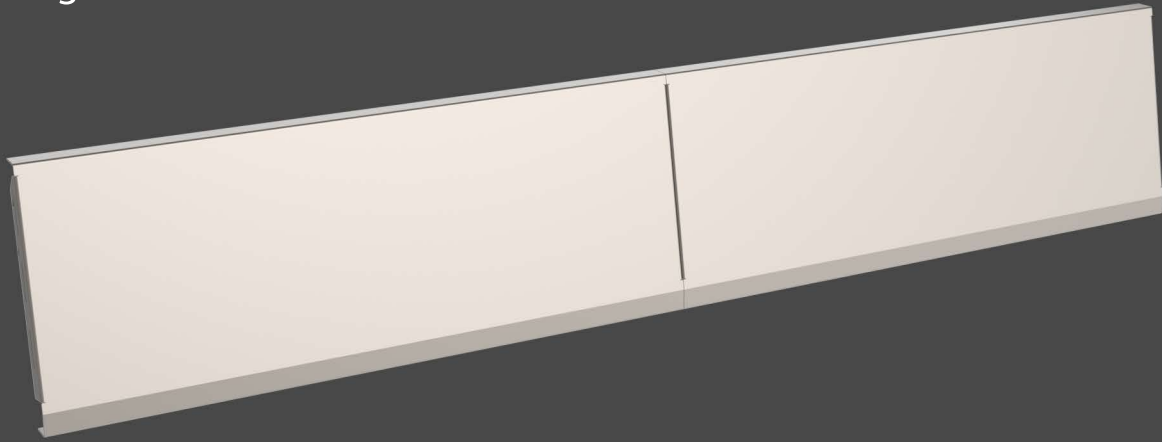


\* Section shows fixing detail on Velox Rapid Edge, other options available.

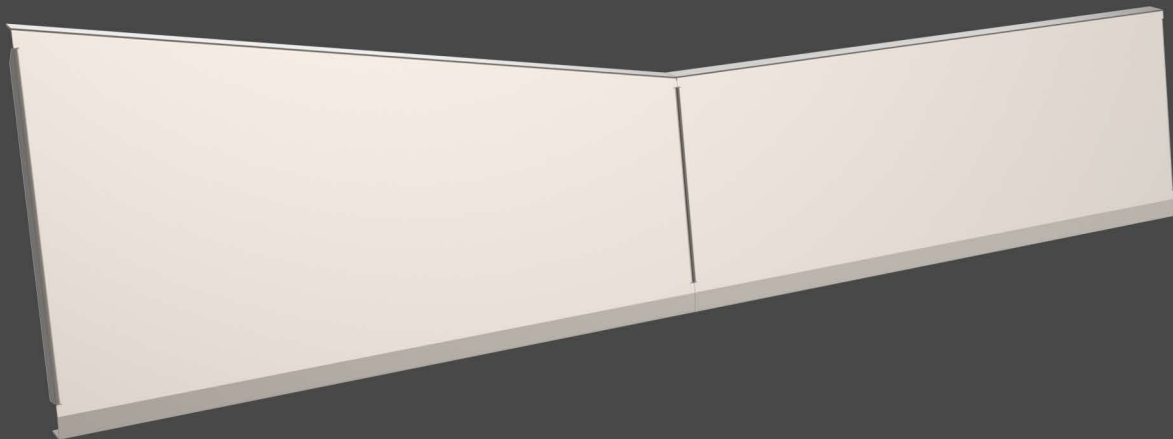
## Configurations

This design is available in straight modules, curved modules (any radii available) and variable height available on both straight & curved.

### Straight Module



### Straight Incline module



## Finishes

Many finishes are available with this design, we've list below the three most popular. However, there are other specialist finishes available, for more information on these please contact the Logic technical team.

### Powder Coated

Wide range of options from RAL colour spectrum



### Stainless Steel

Available in varying grades, according to durability required.

### Weathering Steel

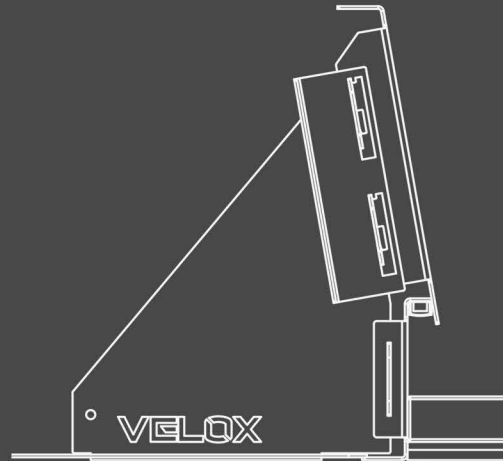
Grade A, for further detail please refer to Logic datasheet.



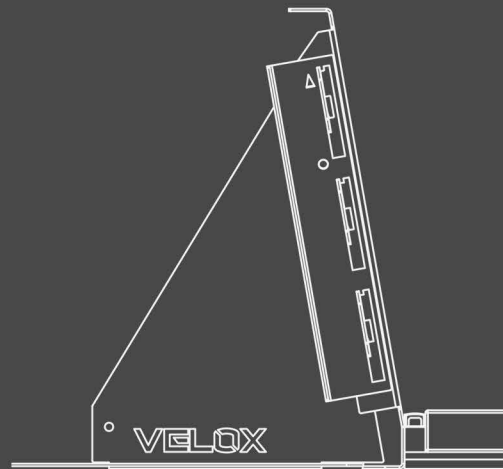
## Lighting

Three lighting options are available with this design. Whilst the electrical fittings are supplied by others, Logic will manufacture to accommodate accordingly

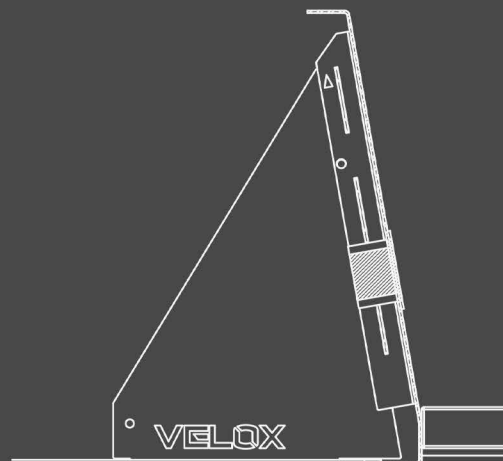
### Integrated Lighting



### Up Lighting



### Inset Lighting





## Product Datasheet

Slante Raised Planter Edging

### Integrated Seating

Logic offer six different integrated seating designs, all of which are compatible with the this planter edge.

Refer to the link below to view these variants

[CLICK HERE](#)



## Installation Method

This design is available with three different fixing methods as detailed below.

### Velox Rapid Edge™



This system utilises the weight of the soil within the planter to provide stability via base plates connected to the planter panels. As a result, no concrete foundation is required, likewise no mechanical fixings. For more information refer to the Velox Rapid Edge system datasheet or contact the Logic technical team.

### Raised Floor

This design has an elevated platform, usually provided by a pedestal-n-rail system, which the planter edge is then secured to. Metal plates (sometimes paving) are extended beneath the planter which provide the base and fixing point for the raised edge.



### Conventional



This is where a concrete foundation is cast to the perimeter of the planter, the panels and components are bolted together and mechanically fixed to this foundation. The foundation provides stability and lateral support to the edge.



# Product Datasheet

Slante Raised planter Edging





## Require assistance?

Call our specification team on 01642 373400

### CONTACT

**Email:** [specification@logic-bespoke.com](mailto:specification@logic-bespoke.com)

**Phone:** 01642 373400