

# Product Datasheet

---

**Swifter**  
**Smarter**  
**Safer**

---

Stapel Planter Tub

**LOGIC**™  
MANUFACTURED BESPOKE

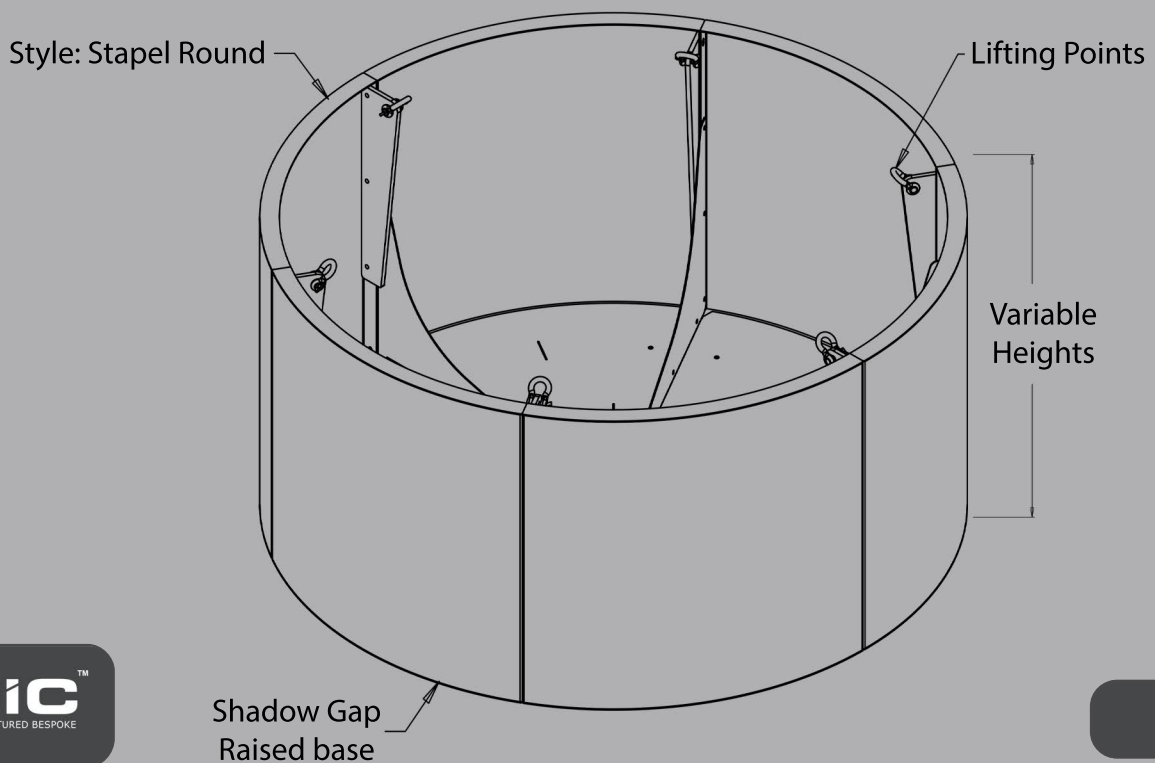
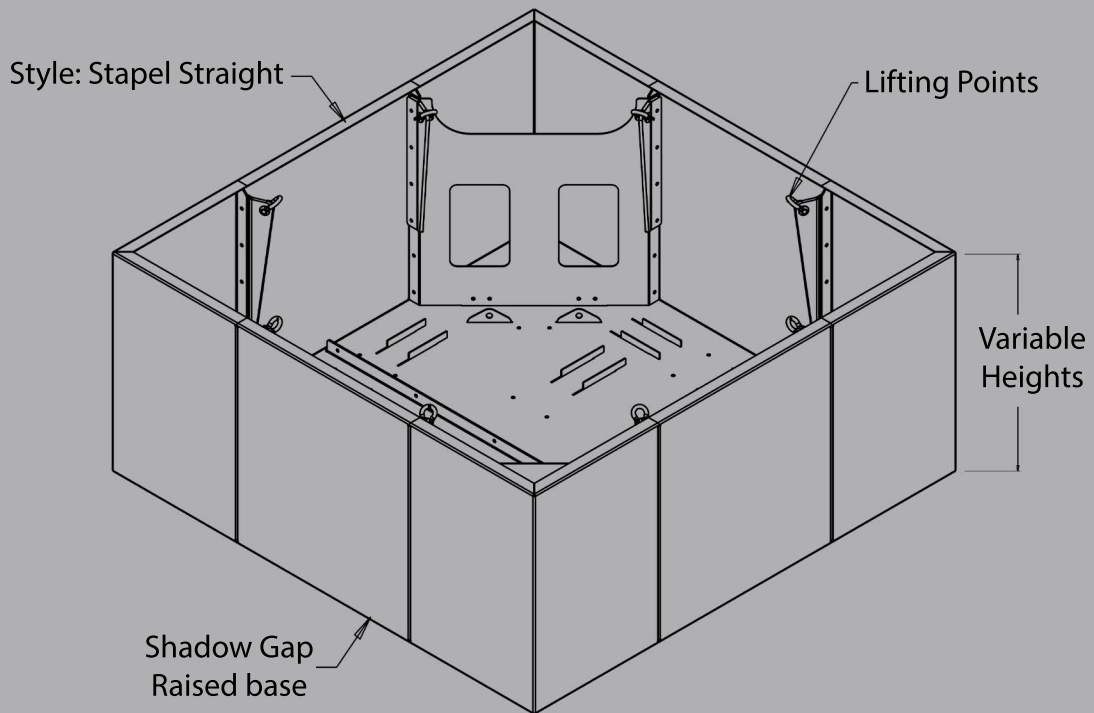
[www.logic-bespoke.com](http://www.logic-bespoke.com)

## Design

The Stapel Planter Tub is defined by its vertical face and classic 50mm top return. For use in areas where access is required; this may be due to services above/below ground where the planters are to be placed, or external events may require temporary relocation. With cleverly hidden lifting eyes, these can be lifted complete with soil and planting content. Due to this, there are certain dimensional restrictions of which our Technical Team can advise on.

## Dimensions

This design is available in any height from 500mm up to 1100mm. Footprints available 500x500mm upto 2000x2000.



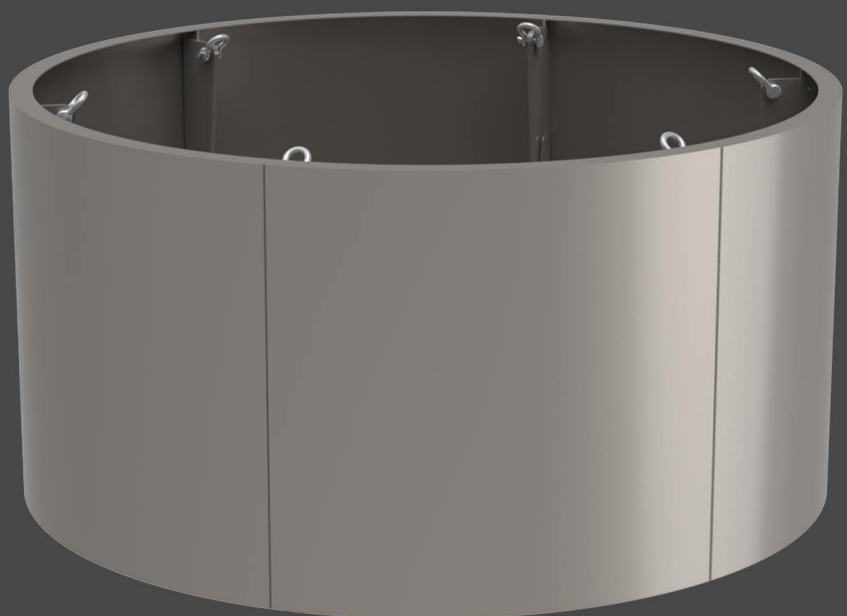
## Shape

These designs are available in square, rectangular & circular designs.

### Square / Rectangular



### Circular



## Product Datasheet

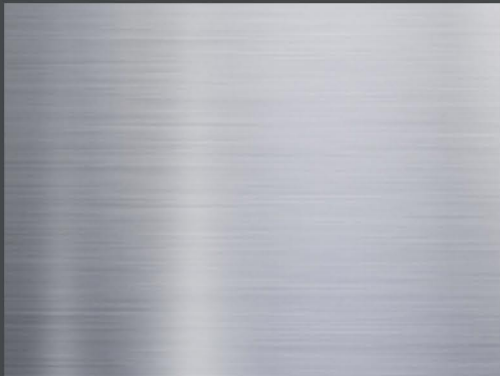
Stapel Planter Tub

### Finishes

Many finishes are available with this design, we've list below the three most popular. However, there are other specialist finishes available, for more information on these please contact the Logic technical team.

#### Powder Coated

Wide range of options from RAL colour spectrum

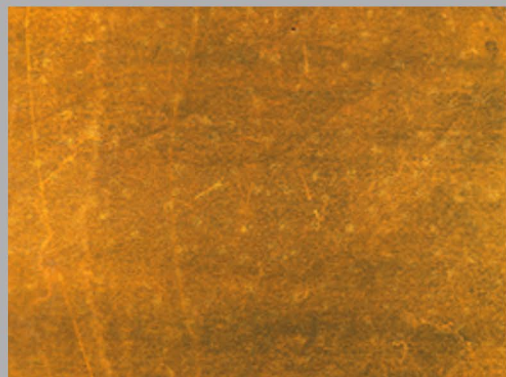


#### Stainless Steel

Available in varying grades, according to durability required.

#### Weathering Steel

Grade A, for further detail please refer to Logic datasheet.



## Require assistance?

Call our specification team on 01642 373400

### CONTACT

**Email:** [specification@logic-bespoke.com](mailto:specification@logic-bespoke.com)

**Phone:** 01642 373400