

Product Datasheet

Swifter
Smarter
Safer

Monte Seating

LOGIC[™]
MANUFACTURED BESPOKE

www.logic-bespoke.com

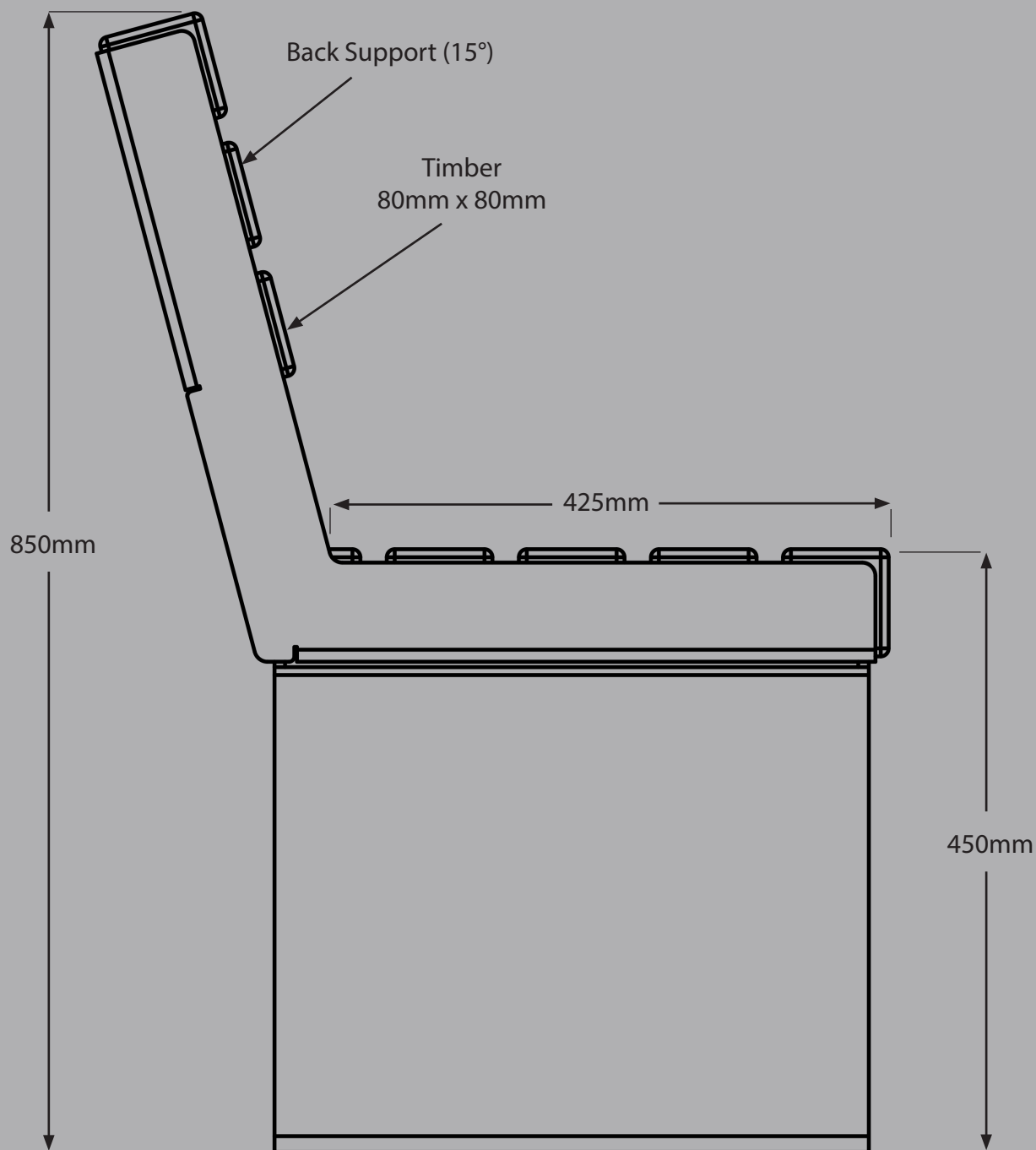
Design

The Monte is a modern, eye-catching design. We were struck by the outwards taper of the legs, giving the impression that the seat has grown out of the ground. Therefore, we named it the Monte which means 'to grow' in the Anglo-Saxon language spoken in the early Middle Ages.



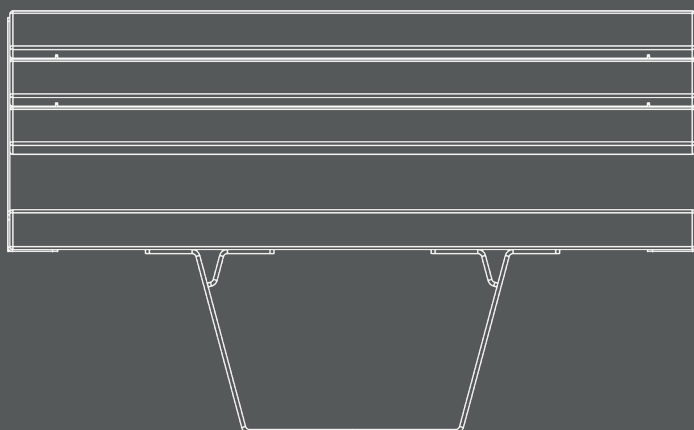
Modules

Seating heights can be configured with any leg length to adapt to 450mm above FFL

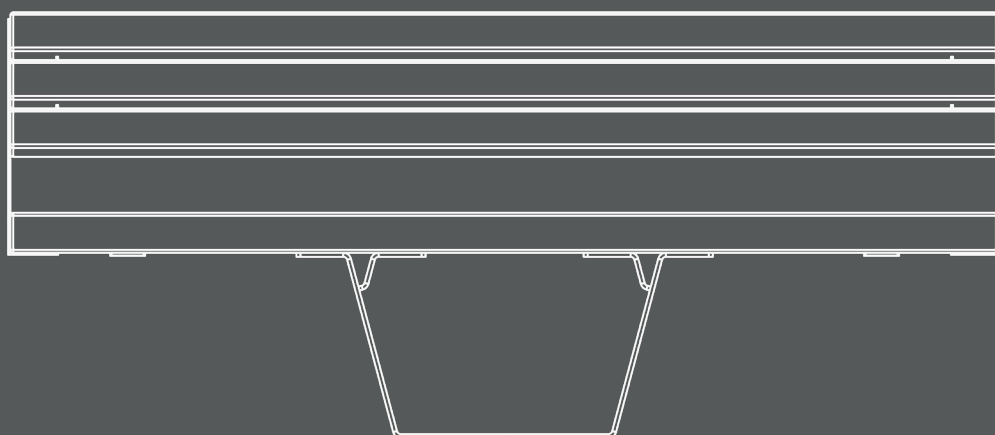


Modules

This design is available in two of the standard seating lengths (1380mm, 1980mm). However custom lengths are available, for more information please contact Logic technical team.



1380mm Length



1980mm Length

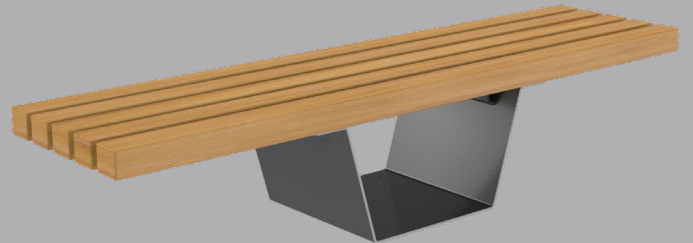
Configurations

This product style is available in straight modules, in both bench and seat configurations.

Straight Module



Bench Module



Seating Module



Product Datasheet

Monte Seating

Finishes

Many finishes are available with this design, we've list below the three most popular. However, there are other specialist finishes available, for more information on these please contact the Logic technical team.

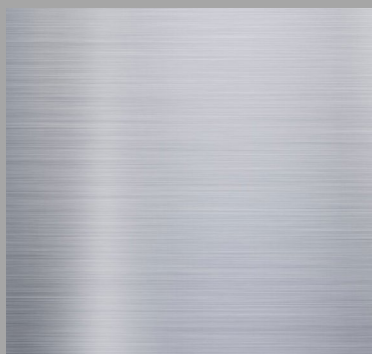
Powder Coated

| | |
|--------------------|---|
| Steel Type: | Galvanised Mild Steel / Stainless Steel / Mild Steel, polyester powder coat finish. |
| Durability: | High /Medium. |
| Surface Finish: | Flat with semi-gloss finish. |
| Aesthetics: | Complete range of RAL colours, specialist finishes available. |
| Country of Origin: | Steel - United Kingdom , with some world wide content. PPC content - United Kingdom. |



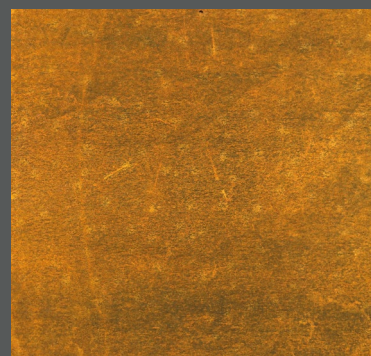
Stainless Steel

| | |
|--------------------|--|
| Steel Type: | Stainless Steel, various grades. |
| Durability: | High. |
| Surface Finish: | Polished, bead blast or brushed. |
| Aesthetics: | Polished very flat surface with almost mirror finish Brushed flat surface with lightly engrained straight lines and a semi matt finish. |
| Country of Origin: | United Kingdom, with some world. wide content. |



Weathering Steel

| | |
|--------------------|--|
| Steel Type: | Weathering Steel, grade A. |
| Durability: | High. |
| Surface Finish: | Flat with slight texture. |
| Aesthetics: | Weathering Steel begins its life looking like ordinary Mild Steel. Over a period of time, due to the moisture levels in the atmosphere, the surface will oxidise turning an orangey brown colour, and eventually self seals. There is no defined period to this process as the moisture levels in the atmosphere fluctuate. Often there are colour variations between sections and also within each section. |
| Country of Origin: | United Kingdom, with some world wide content. |



Product Datasheet

Monte Seating

Finishes

Many finishes are available with this design, we've list below the three most popular. However, there are other specialist finishes available, for more information on these please contact the Logic technical team.

Timber Species

Iroko

| | |
|--------------------|-----------------------|
| Material: | Iroko - Genus Milicia |
| Finish: | Natural |
| Durability: | Class 2 |
| Country of Origin: | Africa |
| Forest Type: | Virgin Rain Forest |

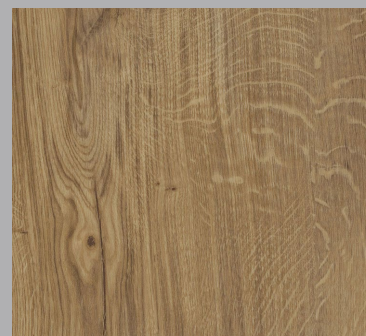


Douglas-Fir

| | |
|--------------------|-------------------------------------|
| Material: | Douglas-Fir - Pseudotsuga Menziesii |
| Finish: | Natural |
| Durability: | Class 3 |
| Country of Origin: | United Kingdom |
| Forest Type: | Plantation |

Oak

| | |
|--------------------|-------------------------------|
| Material: | Oak - Quercus Robur |
| Finish: | Natural |
| Durability: | Class 2 |
| Country of Origin: | United Kingdom |
| Forest Type: | Plantation / Secondary Growth |

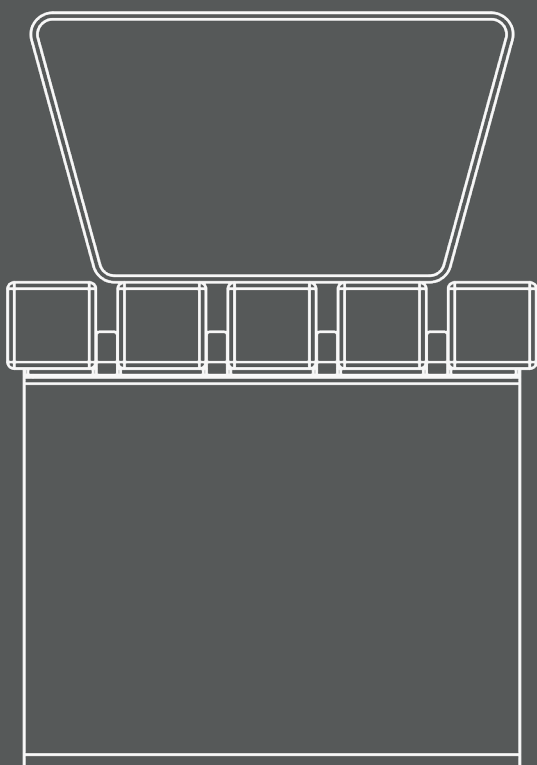


As wood is a natural grown material, there will be variations in colour, grain structure, knots and moisture content. This all creates the beauty of this versatile material. Some timbers have a greater or lesser concentration of naturally occurring Quertannic acids, please refer to the O&M manual for handling of such.

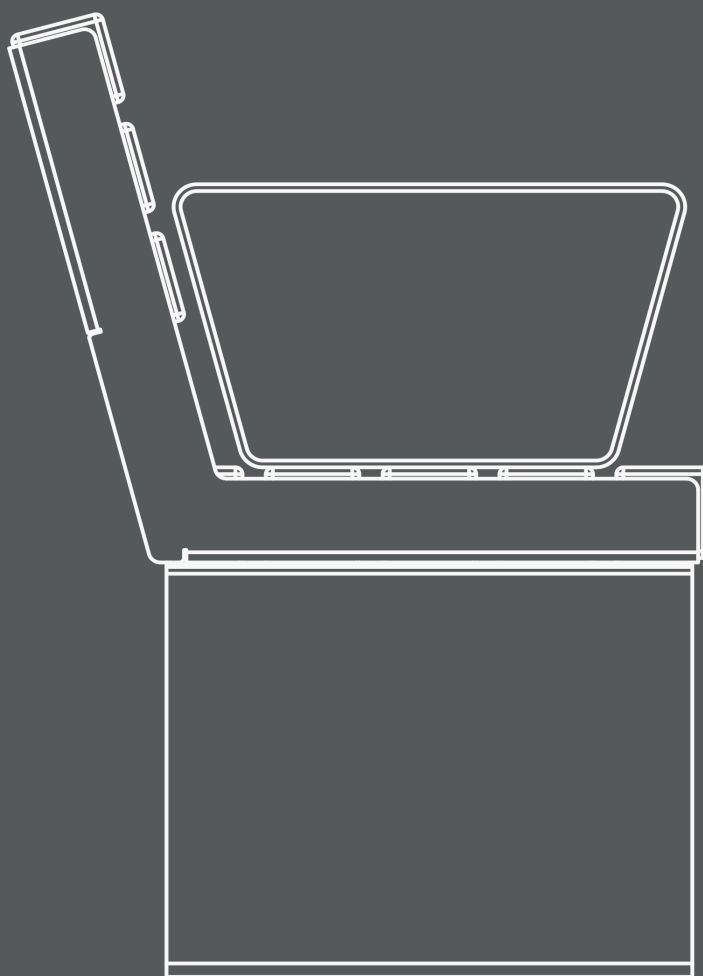
Arm Detail

This product has an optional arm details available. For more information please contact Logic technical team.

Bench Arm Detail



Seat Arm Detail





Require assistance?

Call our specification team on 01642 373400

CONTACT

Email: specification@logic-bespoke.com

Phone: 01642 373400