

Product Datasheet

Swifter
Smarter
Safer

Plateu Table

LOGICTM
MANUFACTURED BESPOKE

www.logic-bespoke.com

Design

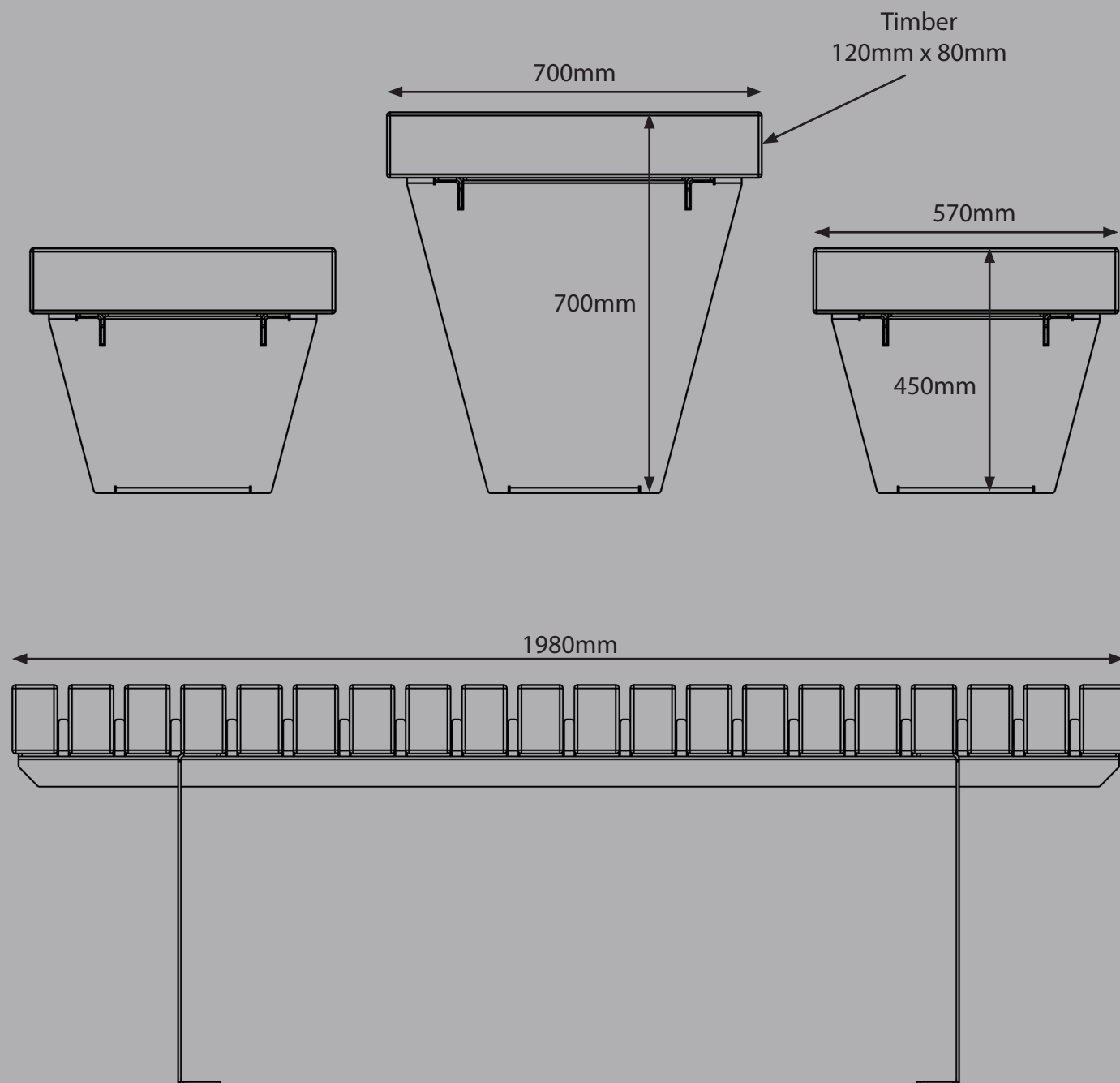
The Plateau picnic sets feature square profile timber slats that match other furniture products in this collection. The steel legs have a simple design, allowing for easy shape adjustment according to your preferences. As always with this design, the bulky, intermediate timbers are a dramatic statement of bold originality.

Product Datasheet

Plateau Table

Modules

Table and bench heights can be configured with any leg length to adapt to 700mm above FFL and bench heights are 450mm above FFL.



Product Datasheet

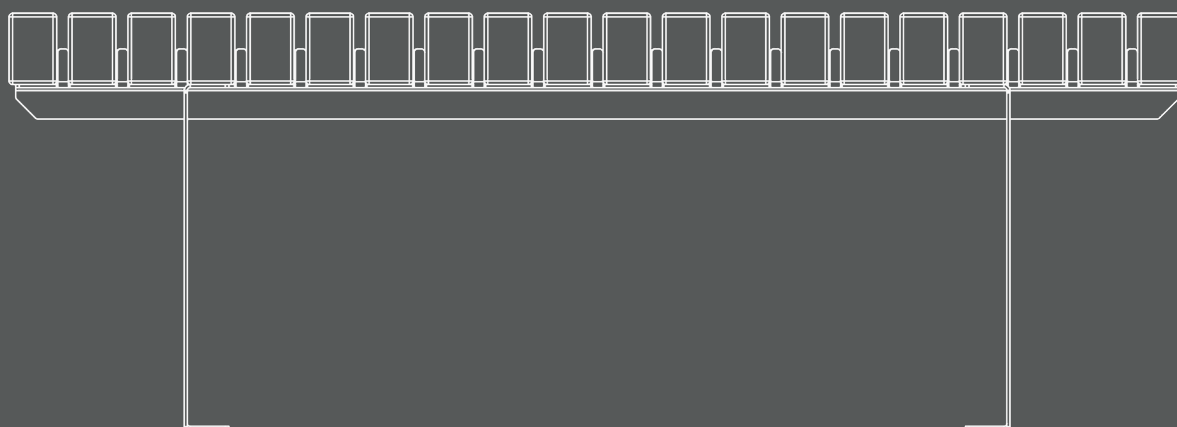
Plateu Table

Modules

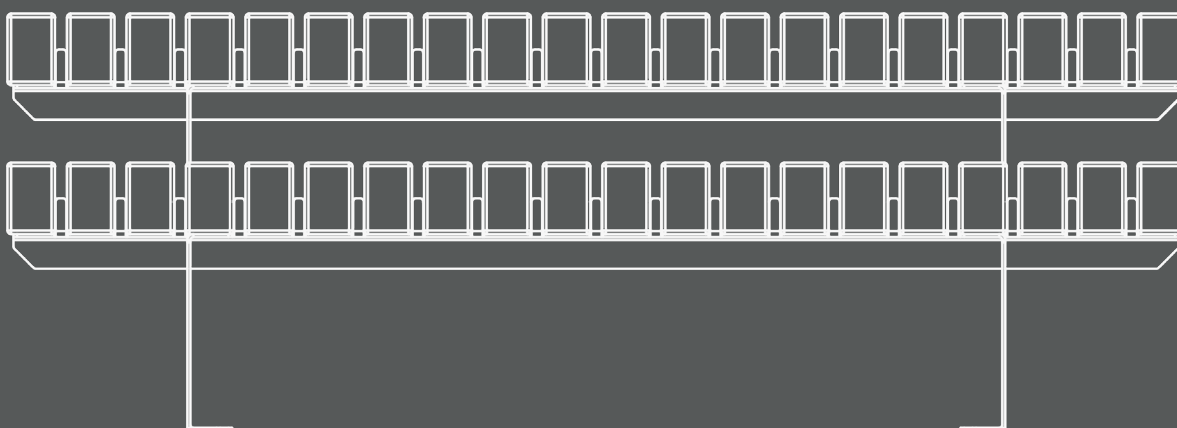
This design is available 1980mm as standard.

However custom lengths are available, for more information please contact Logic technical team.

Table 1980mm Length



Bench & Table 1980mm Length



Product Datasheet

Plateau Table

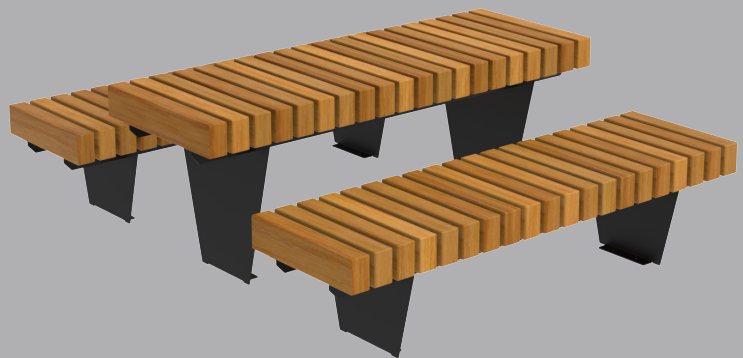
Configurations

This product style is available in straight modules, with optional bench configurations.

Straight Module



Table & Bench Module



Bench Module

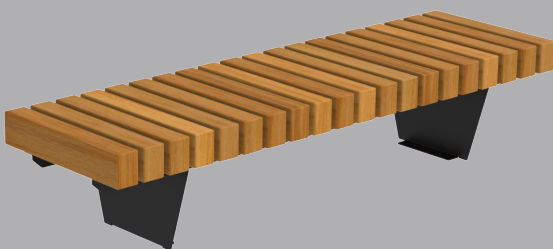
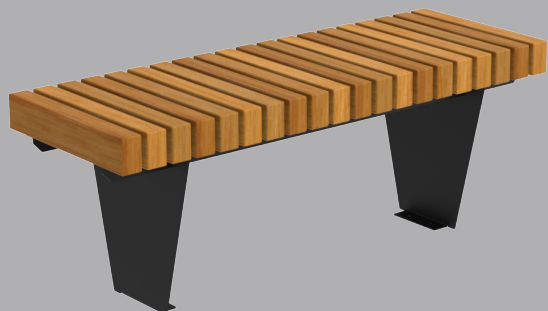


Table Module



Product Datasheet

Plateau Table

Finishes

Many finishes are available with this design, we've list below the three most popular. However, there are other specialist finishes available, for more information on these please contact the Logic technical team.

Powder Coated

| | |
|--------------------|---|
| Steel Type: | Galvanised Mild Steel / Stainless Steel / Mild Steel, polyester powder coat finish. |
| Durability: | High /Medium. |
| Surface Finish: | Flat with semi-gloss finish. |
| Aesthetics: | Complete range of RAL colours, specialist finishes available. |
| Country of Origin: | Steel - United Kingdom , with some world wide content. PPC content - United Kingdom. |



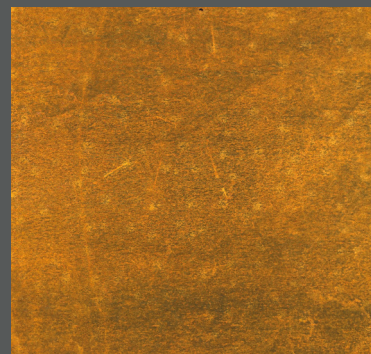
Stainless Steel

| | |
|--------------------|--|
| Steel Type: | Stainless Steel, various grades. |
| Durability: | High. |
| Surface Finish: | Polished, bead blast or brushed. |
| Aesthetics: | Polished very flat surface with almost mirror finish Brushed flat surface with lightly engrained straight lines and a semi matt finish. |
| Country of Origin: | United Kingdom, with some world. wide content. |



Weathering Steel

| | |
|--------------------|--|
| Steel Type: | Weathering Steel, grade A. |
| Durability: | High. |
| Surface Finish: | Flat with slight texture. |
| Aesthetics: | Weathering Steel begins its life looking like ordinary Mild Steel. Over a period of time, due to the moisture levels in the atmosphere, the surface will oxidise turning an orangey brown colour, and eventually self seals. There is no defined period to this process as the moisture levels in the atmosphere fluctuate. Often there are colour variations between sections and also within each section. |
| Country of Origin: | United Kingdom, with some world wide content. |



Product Datasheet

Plateau Table

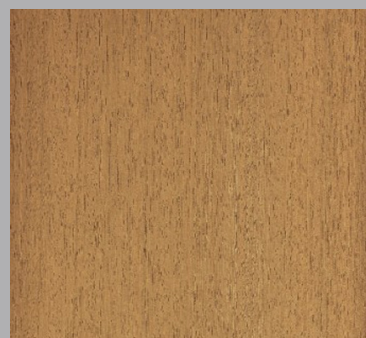
Finishes

Many finishes are available with this design, we've list below the three most popular. However, there are other specialist finishes available, for more information on these please contact the Logic technical team.

Timber Species

Iroko

| | |
|--------------------|-----------------------|
| Material: | Iroko - Genus Milicia |
| Finish: | Natural |
| Durability: | Class 2 |
| Country of Origin: | Africa |
| Forest Type: | Virgin Rain Forest |



Douglas-Fir

| | |
|--------------------|-------------------------------------|
| Material: | Douglas-Fir - Pseudotsuga Menziesii |
| Finish: | Natural |
| Durability: | Class 3 |
| Country of Origin: | United Kingdom |
| Forest Type: | Plantation |

Oak

| | |
|--------------------|-------------------------------|
| Material: | Oak - Quercus Robur |
| Finish: | Natural |
| Durability: | Class 2 |
| Country of Origin: | United Kingdom |
| Forest Type: | Plantation / Secondary Growth |



As wood is a natural grown material, there will be variations in colour, grain structure, knots and moisture content. This all creates the beauty of this versatile material. Some timbers have a greater or lesser concentration of naturally occurring Quertannic acids, please refer to the O&M manual for handling of such.

Require assistance?

Call our specification team on 01642 373400

CONTACT

Email: specification@logic-bespoke.com

Phone: 01642 373400